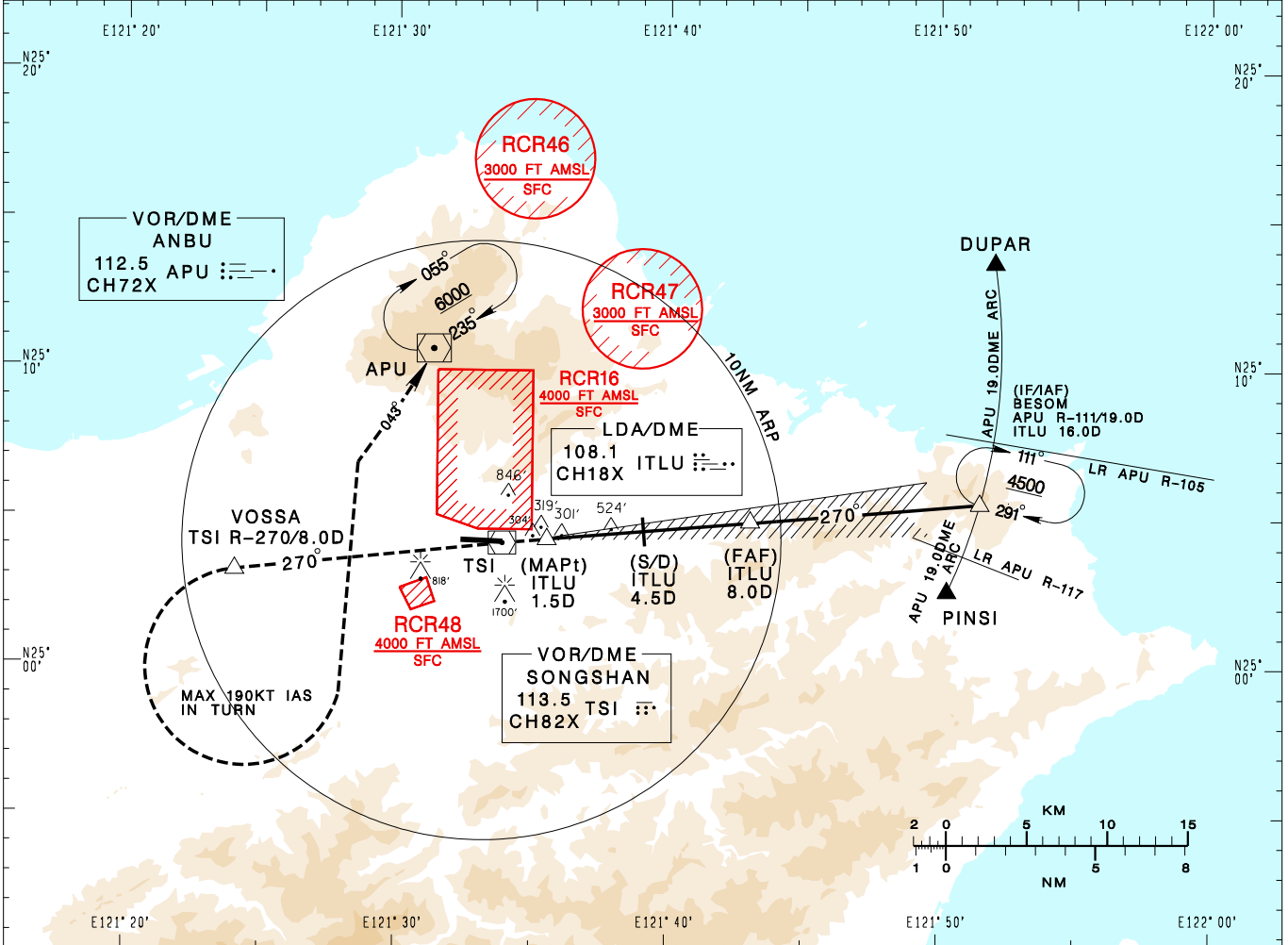


臺北/松山機場
TAIPEI/SONGSHAN AD

RCSS
LDA RWY28

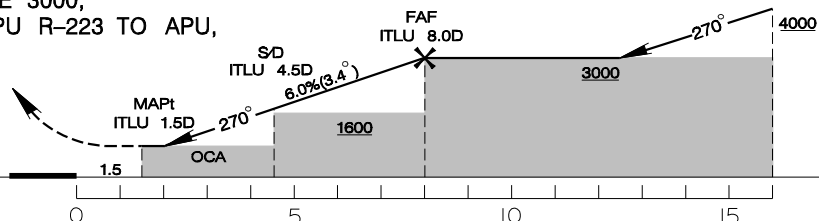
TAIPEI APP 119.7 119.6 125.1	SONGSHAN TWR 118.1	ATIS 127.4 341	VAR 5°W-2022 ↑ 9100' MSA ARP 25NM	
Apt Elev: 18'	Rwy28 THR Elev: 14'	Trans Level: FL130		Trans Alt: 11,000'
BEARINGS ARE MAGNETIC; DISTANCES ARE NAUTICAL MILES; ELEVATIONS, HEIGHTS IN FEET				



DIST to ITLU	2.0DME	3.0DME	4.0DME	4.5DME	5.0DME	6.0DME	7.0DME	8.0DME
ADVISORY ALT	790	1160	1520	1700	1890	2260	2630	3000

MISSED APCH:
DIRECT TO TSI, THEN TRACK TSI-R-270 TO VOSSA,
CROSS VOSSA AT OR ABOVE 3000,
THEN TURN LEFT TRACK APU R-223 TO APU,
CLIMB TO 6000 AND HOLD.

*MISSED APCH TURN LIMITED TO 190 KT IAS.



NM FROM ITLU

MINIMA (OCA IN FT, VIS IN M, OCH IN FT)

CATEGORY	A	B	C	D
STRAIGHT IN	770/3500 752			
CIRCLING	1180/3600 1162	N/A		

- NOTE
- LDA COURSE OFFSETS FROM LANDING RWY BY 7 DEG.
 - FINAL APCH COURSE CROSSES RWY CL EXTENSION AT 0.54NM FROM THR28.
 - DESCENT ANGLE FROM FAF IS 3.4°, NOT COINCIDENT WITH PAPI.
 - CIRCLING ONLY AUTHORIZED FOR CAT A HELICOPTERS.
 - A 1700ft-HIGH BUILDING AT 2.1NM SOUTH OF THR28.
 - A 818ft-HIGH BUILDING AT 2NM SW OF THR10.
 - CAUTION OBSTACLES UP TO 304FT AT 1NM EAST OF THR28 PENETRATE THE VISUAL SEGMENT SURFACE(VSS).
 - ATS SURVEILLANCE REQUIRED.

*DME REQUIRED

CHANGES: RCR49 COMPLETELY WITHDRAWN